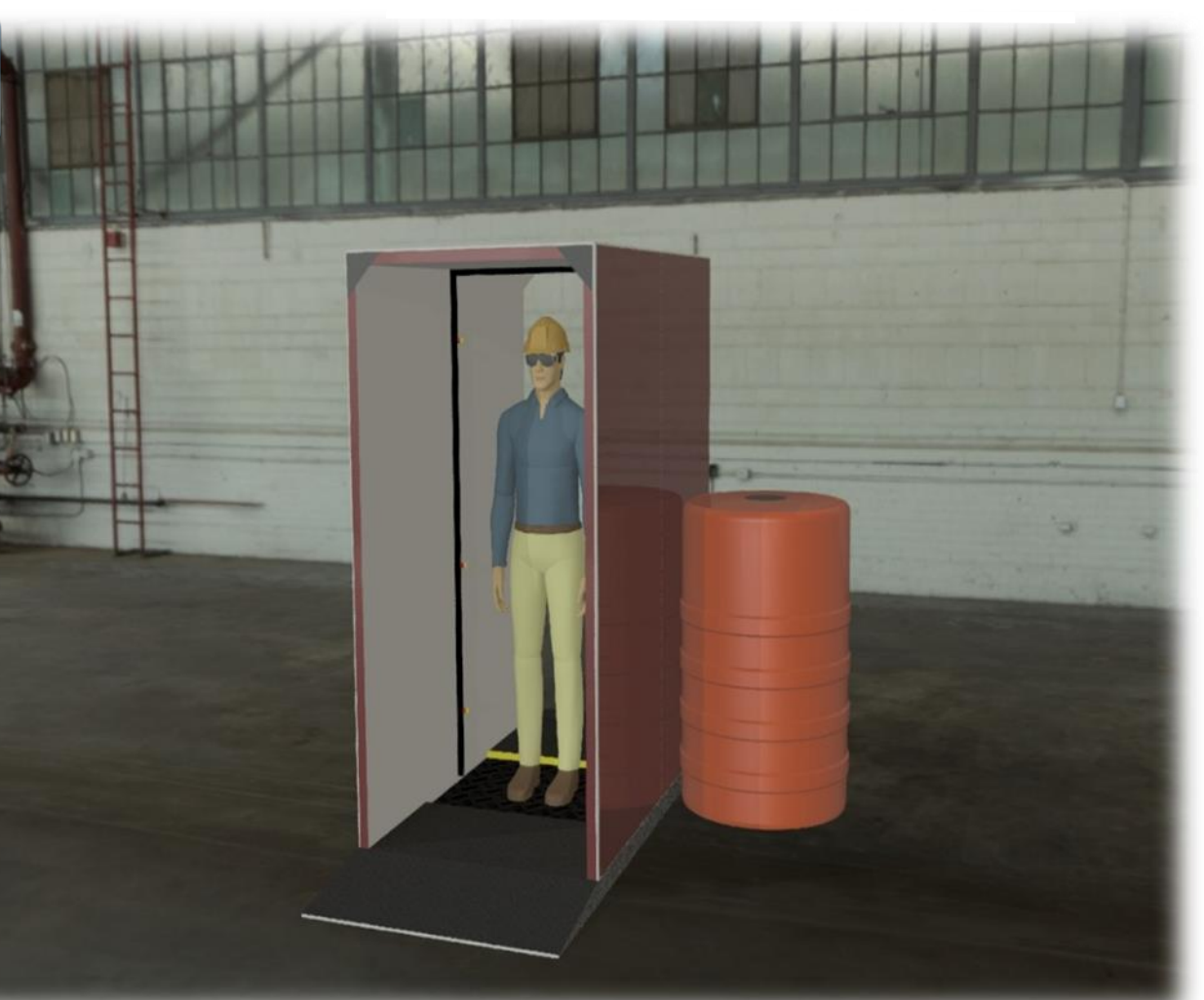
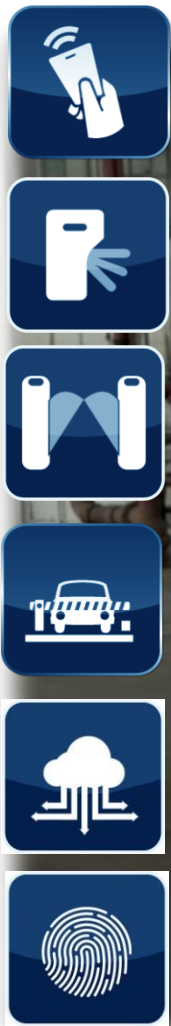




Manufacturers of physical access control, distributors of biometric systems

Sanitising Walk Through Booth

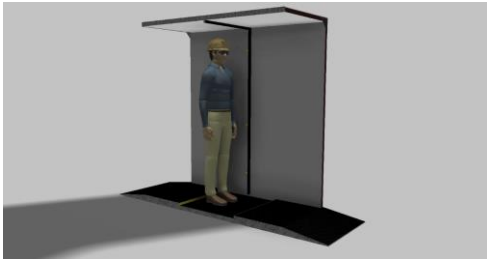


10 year warranty
on our turnstile mechanisms
- excluding electronics

iMAT Sanitising Walk Through Booth

iMAT Sanitising Walk Through Booth offers safe and convenient way to sanitise a person by walking through the booth. The sanitising sprayers automatically switch on when entering the booth spraying the sanitising liquid in a fine mist onto the person covering the entire person from head to toe.

FEATURES



- 260 Litre vertical storage tank
- Automatic beam sensor activated
- Sprays hands, head, body, legs & feet.
- Adjustable base feet for easy levelling on any solid surface
- Auto fluid level switch
- +/- 3000 people sanitised per full tank
- Flatpack modular construction for easy transport
- Simple easy setup. Step by step manual

APPLICATION



- Corporate Facilities
- Mining Sector
- Public Transport
- Educational Facilities
- Industrial Facilities
- Government Facilities
- Retail Shopping Centres
- Residential Estates

BRANCHES

WESTERN CAPE
021 556 3866

GAUTENG
011 975 6400

KWAZULU NATAL
031 942 3437

www.imat.co.za
info@imat.co.za





TECHNICAL SPECIFICATIONS

Power: 220V AC 50/60 Hz

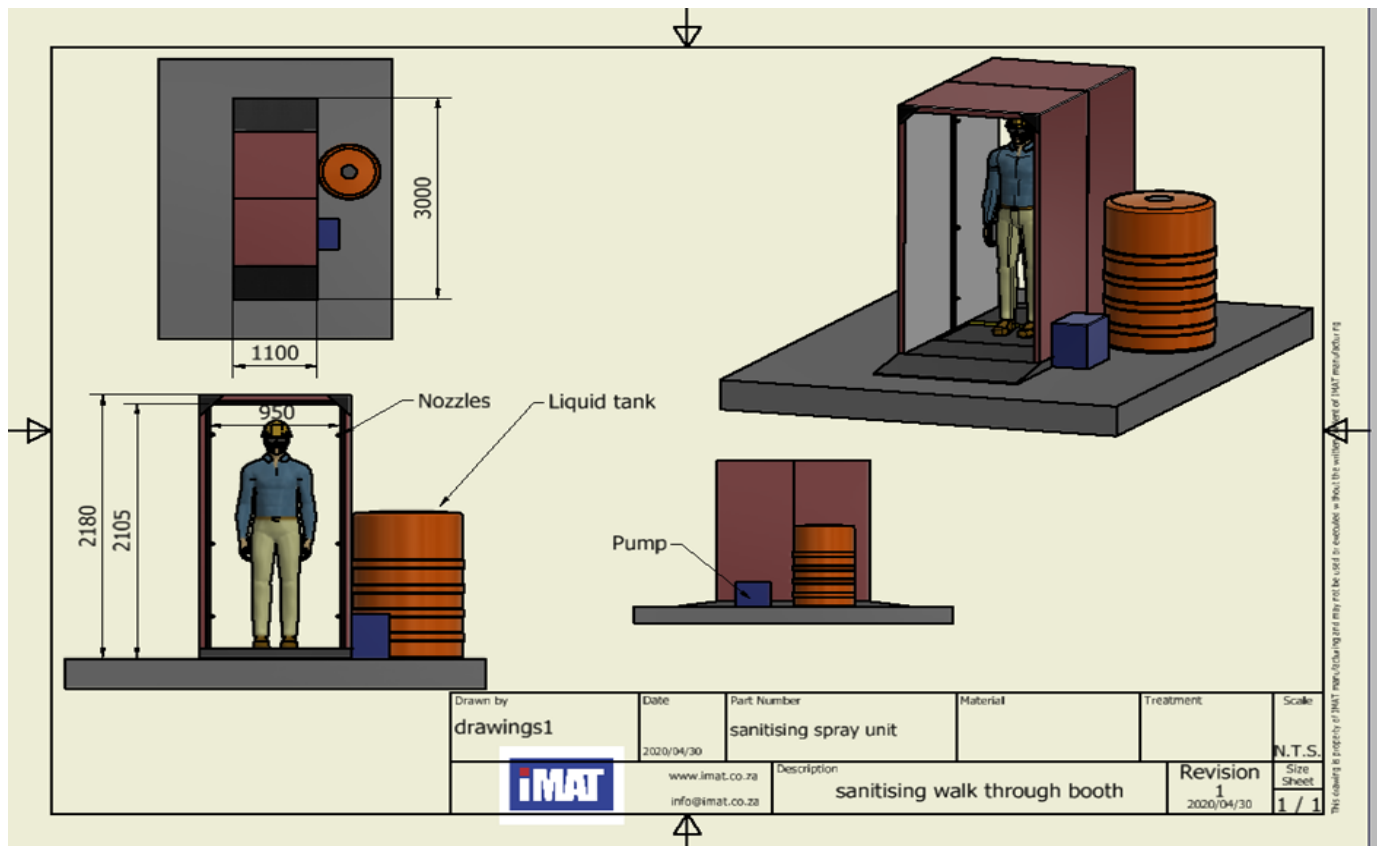
Power Consumption: Max- 750W

Dimensions: See drawings

Environment: Indoor and outdoor

Finishing Options: Mild steel epoxy powder coated/ Mild steel hot dip galvanised/ Stainless steel 304 brushed

Installation Requirements: Solid base



BRANCHES

WESTERN CAPE
021 556 3866

GAUTENG
011 975 6400

KWAZULU NATAL
031 942 3437

www.imat.co.za
info@imat.co.za

